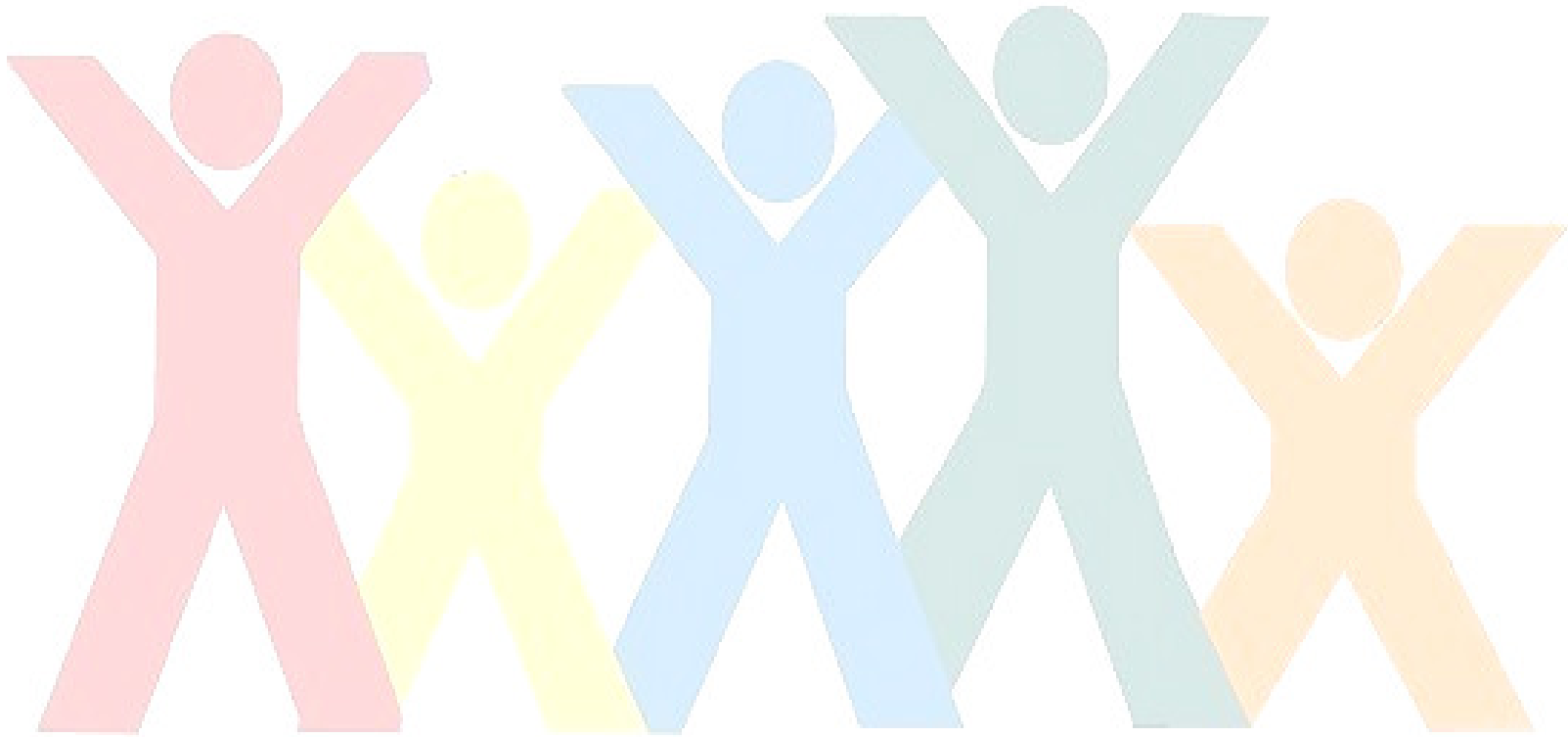


Substance Abuse 2009 Data for Calhoun County



SAC

Substance Abuse Council



Substance Abuse Council

A Drug Prevention Coalition Serving Calhoun County
 P: 269-968-4699
www.drugfreebc.org

METHAMPHETAMINE

Meth Lab Activity ⁸		
	# labs – Calhoun	# labs – MI
2002	1	225
2003	2	267
2004	9	295
2005	1	341
2006	4	256
2007	2	164
2008	16	211
2009	14 (as of May)	N/A

Meth lab activities in Calhoun County, as in the state, have had a dramatic rise in the last year. The Calhoun County Meth Task Force is responding to drug endangered children (D.E.C.) found in homes seeking stricter legislation on precursor product sales and increasing meth awareness outreach.

TOBACCO

Tobacco continues to be a gateway drug of concern. For these reasons, the Calhoun County Cancer Control Coalition and Youth Tobacco Reduction groups promote prevention programs and smoking cessation services to educate, mobilize, and change policies and norms to reduce incidence and death.

MiPHY data for Calhoun County 2008 ⁹							
	County	Gender		Race			
		M	F	Black	White	Hispanic	American Indian
ATTITUDES TOWARD TOBACCO							
% of students who reported sort of easy or very easy to get cigarettes	29.4%	28.9%	30.0%	15.4%	27.4%	43.3%	29.4%
% of students who reported regular cigarette use to be a moderate/great risk	85.6%	86.0%	85.2%	66.7%	87.2%	76.7%	83.3%
% of students who reported cigarette use by peers to be wrong or very wrong	89.9%	92.7%	87.3%	91.7%	92.2%	70.0%	100.0%
% of students who reported they thought none or some of their friends had smoked cigarettes recently	94.2%	95.7%	92.9%	91.7%	96.0%	80.0%	94.4%
% of students who reported their parents felt cigarette use to be wrong/very wrong	95.9%	95.2%	96.6%	100.0%	97.1%	89.7%	82.4%
TOBACCO							
% of students who ever smoked a whole cigarette (lifetime)	6.0%	5.9%	6.2%	0%	5.4%	16.7%	0%
% of students who ever smoked cigarettes on one or more of the past 30 days	1.8%	1.1%	2.5%	0%	1.9%	4.0%	0%
% of students who ever smoked cigarettes on 20 or more of the past 30 days	0.3%	0%	0.5%	0%	0.3%	0%	0%



Substance Abuse Council

A Drug Prevention Coalition Serving Calhoun County
P: 269-968-4699
www.drugfreebc.org

Tobacco Compliance Checks ^{4,14}

Of 138 total checks conducted in the spring of 2009, 126 (91%) were in compliance (did not sell) to minors.

Tobacco continues to be the number one preventable cause of death in Calhoun County. The rate of adult smoking in Calhoun County is 22.9% compared to 21.7% for Michigan (2005-07).

The majority of lung cancer deaths are caused by smoking. Lung cancer rates remain steady for Michigan. Calhoun County shows a decrease in incidence between 2006 and 2007 (64.6% in 2007 vs. 82.2% in 2006).

LUNG CANCER MORTALITY RATES (per 100,000 people)		
	Calhoun ³	MI ⁵
2000	59.8	56.6
2001	55.3	56.9
2002	59.2	56.6
2003	56.4	56.1
2004	54.9	56.8
2005	61.0	55.9
2006	82.2	55.6
2007	64.6	55.5

LUNG CANCER MORTALITY 3-YEAR AVERAGE RATES BY RACE—CALHOUN COUNTY (per 100,000 people) ³		
	WHITE	AFRICAN AMERICAN
2001-03	56.2	72.3
2002-04	54.9	81.6
2003-05	54.8	88.6
2004-06	64.0	85.7
2005-07	67.1	81.8

PRESCRIPTION DRUG ABUSE

MiPHY data for prescription drug abuse 2008 ⁹									
	County	Grade		Gender		Race			
		9	11	M	F	Black	White	Hispanic	American Indian
% of students who have taken barbiturates without a doctor's prescription during the past 30 days	2.7%	2.5%	2.8%	3.5%	2.0%	0%	2.6%	2.1%	9.1%
% of students who took a prescription drug without a doctor's prescription one or more times during the past 30 days	4.6%	4.4%	4.9%	4.7%	4.5%	0%	4.3%	6.1%	18.2%
% of students who took painkillers without a doctor's prescription one or more times during the past 30 days	10.5%	10.6%	10.3%	11.5%	9.6%	11.1%	10.2%	10.2%	36.4%

These data demonstrate a persistent although low usage of prescription drugs within the community. While they are evenly distributed across age groups, they are unevenly distributed across racial groups with American Indians demonstrating highest usage followed by Whites and Hispanics using essentially equal amounts. These data also indicate that teens are 5 times more likely to use a pain killer than they are to use a barbiturate thus demonstrating a need for adults to be vigilant about the storage of pain killers within the home.

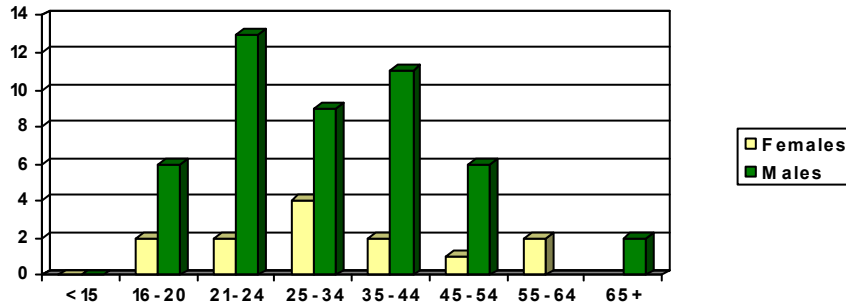


Substance Abuse Council

A Drug Prevention Coalition Serving Calhoun County
P: 269-968-4699
www.drugfreebc.org

ALCOHOL

Alcohol Related Traffic Crash Deaths by Age & Gender ¹¹



Alcohol related traffic crash deaths over the past 10 years were analyzed using data provided by the Michigan State Police. These data indicate that the majority of these deaths (75%) occur to individuals aged 21 to 44 and that 80% of these deaths occur to males. These data reveal that 75% of the alcohol related traffic deaths among teens occur to males.

Alcohol Involved Traffic Crash Summary ¹¹						
	Total Crashes	Fatal Crashes	Personal Injury Crashes	Property Damage Crashes	Persons Killed	Persons Injured
2005	216	3	84	129	3	116
2006	198	6	75	117	9	106
2007	163	7	63	93	7	91
2008	175	5	67	103	9	110

These data demonstrate no statistically significant change over the past 4 years and appear, by proxy, to indicate no change in the community's attitude toward drinking and driving.

Alcohol Retail Compliance					
YEAR	2004	2005	2006	2007	2008
CALHOUN ¹³	87%	85%	87%	88%	95%
MICHIGAN ⁷	84%	83%	83%	85%	87%

In 2008 95% of retailers in Calhoun County did not sell alcohol to minors during compliance checks. Of those that did, 47% of the sellers looked at the minor's identification (vertical license, state ID) and still sold.

ALCOHOL-INDUCED MORTALITY RATES (per 100,000 people)		
	Calhoun ³	MI ⁵
2000-02	10.1	6.7
2001-03	11.3	6.6
2002-04	10.9	6.4
2003-05	12.2	6.8
2004-06	11.0	6.5
2005-07	112.2	6.5

PERCENT OF ADULTS WHO REPORTED ENGAGING IN HEAVY DRINKING AND BINGE DRINKING (2005-07)		
	Calhoun ³	MI ⁵
Heavy Drinking	4.9	5.6
Binge Drinking	11.7	17.4



Substance Abuse Council

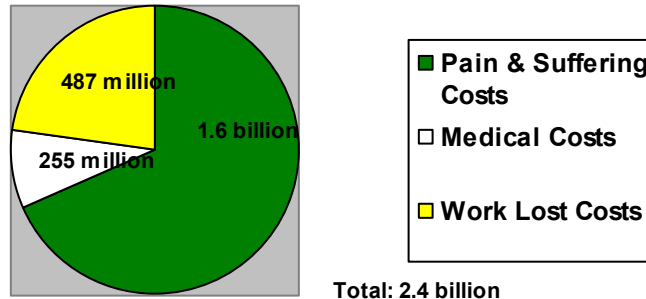
A Drug Prevention Coalition Serving Calhoun County
 P: 269-968-4699
 www.drugfreebc.org

Tragic health, social and economic problems result from the use of alcohol by youth. Underage drinking is a causal factor in a host of serious problems including homicide, suicide, traumatic injury, drowning, burns, violence, property crime, high risk sex, fetal alcohol syndrome, alcohol poisoning and need for treatment for alcohol abuse and dependence.

Problems and Costs Associated with Underage Drinking in Michigan ¹²

Costs of Underage Drinking

Michigan 2007



Costs of Underage Drinking by Problem, 2007

Problem	Michigan (in millions)
Youth Violence	\$ 1,669.8
Youth Traffic Crashes	\$ 253.6
High-Risk Sex, Ages 14-20	\$ 129.8
Youth Property Crime	\$ 100.2
Youth Injury	\$ 68.2
Poisonings and Psychoses	\$ 13.4
FAS Among Mothers age 15-20	\$ 32.6
Youth Alcohol Treatment	\$ 84.7
TOTAL	\$2,352.3

Alcohol Consumption by Youth in Michigan

Underage Drinking is widespread in Michigan. Approximately 476,000 underage youth in Michigan drink each year. In 2007, according to self-reports by Michigan students in grades 9-12:

- 72% had at least one drink of alcohol on one or more days during their life.
- 21% has their first drink of alcohol, other than a few sips, before age 13.
- 43% had at least one drink of alcohol on one or more occasion in the past 30 days.
- 25% had five or more drinks of alcohol in a row (i.e. binge drinking) in the past 30 days.
- 4% had at least one drink of alcohol on school property on one or more of the past 30 days.

In 2007, underage drinkers consumed 15.9% of all alcohol sold in Michigan, totaling \$773 million in sales. These sales provided profits of \$379 million to the alcohol industry.



Substance Abuse Council

A Drug Prevention Coalition Serving Calhoun County
P: 269-968-4699
www.drugfreebc.org

Three Calhoun County school districts participated in the 2007-2008 survey. Almost 33% of youth claim to have used alcohol within the past 30 days while 15% claimed to have used marijuana.

Michigan Profile For Healthy Youth (MiPHY) ⁹		
Indicator	Alcohol	Marijuana
% of students who report regular use to be a moderate or great risk	70%	73%
% who have tried before the age of 13 years	16%	7%
% who used during the past 30 days	31%	15%
% who reported their parents felt use to be wrong or very wrong	83%	92%

37th Judicial Circuit Court Family Division Referral Data—Juvenile Data ¹					
DELINQUENCY PROCEEDINGS	2004	2005	2006	2007	2008
Controlled Substance Violation	122	131	95	104	75
Alcohol Related	5	6	101	62	58
Tobacco Violation	47	46	29	34	22

TREATMENT

Substance Abuse Treatment ⁴		
Drug name	Total Number	Percent
Alcohol	812	48%
Marijuana/hashish	318	19%
Cocaine	183	11%
Other*	183	11%
Crack Cocaine	57	3%
Heroin	34	2%
Methamphetamines	32	2%
Methadone (illicit)	26	2%
Hallucinogens	23	1%
Ecstasy (MDMA,MDA)	10	1%
Inhalants	1	0%
Total	1679	100%

SUBSTANCE ABUSE TREATMENT:

In FY 2008-2009, 1679 individuals presented for alcohol or drug treatment. The top three reasons individuals presented for treatment (78% of total reasons) were alcohol (48%), marijuana (19%), and cocaine (11%). The top three reasons for FY 2007-2008 were alcohol, marijuana and opiates. In the adjacent table, opiates are included in the Other category that hold the FY 2008-2009 fourth most common reason individuals present for treatment.

*Others include synthetic opioids, barbiturates, sedatives, tranquilizers, benzodiazepines, amphetamines and over the counter medicines.

RECOVERY

AA and NA Meetings ¹⁰			
	Weekly Meetings	Weekly Attendance	Avg. Meeting Attendance
Battle Creek	116	1,346	12
Marshall	21	211	10
Other	10	60	6

Calhoun County offers, on average, 147 weekly Alcoholics Anonymous and Narcotics Anonymous meetings. The number of self-help meetings is an indicator of the community's informal support system and capacity to promote sobriety.



Substance Abuse Council

A Drug Prevention Coalition Serving Calhoun County
 P: 269-968-4699
 www.drugfreebc.org

SUBSTANCE ABUSE RELATED DEATHS²

Primary Cause of Death	Percent	
	2008	2009
Accidental OD	70%	70%
Suicide	17%	11%
Heart Attack	3%	7%
Mixed Drugs	0%	7%
Natural	0%	4%
Undetermined	2%	0%
Secondary Cause of Death		
Drug	22%	44%
Alcohol	67%	38%
Natural	10%	19%

Drug Hierarchy	Percent	
	2008	2009 (through July)
Cocaine	12%	25%
Heroin	3%	0%
Hydrocodone	3%	0%
Methadone	3%	13%
Methanol	3%	13%
Mixed	67%	38%
Morphine	6%	0%
Opiates	3%	13%

Data from the Medical Examiner (ME) was collected for 2008 and 2009 annualized (July). These data indicate a decrease in substance abuse related deaths from 2008 to 2009 by approximately one-third. While the age distribution is essentially unchanged, the median age has shifted slightly from 46 years age in 2008 to 43 years age in 2009 (annualized). Racial distribution has remained unchanged over these two years; however, gender distribution has shifted up to more females in 2009. The primary cause of death, accidental overdose (70%), has remained the same over these two years; the hierarchy of the remaining distribution has additionally remained the same although the percentage distribution has shifted from suicide and to the remaining causes. When considering the secondary cause of death, drugs and alcohol have significantly reversed their positions over the past two years. The distribution of the specific drugs involved in deaths over the past two years has seen cocaine double and methadone, methanol and opiates increase by four times their rates in 2008. On the positive side, the rates of heroine, hydrocodone and morphine have all decreased to zero.

Gender	2008	2009
Female	35%	41%
Male	65%	59%
Race		
Black	19%	19%
White	81%	81%

AGE	13-18	19-29	30-39	40-49	50-59	60-69	70-79
2008	2%	10%	19%	32%	19%	16%	3%
2009 (through July)	0%	7%	26%	33%	11%	15%	7%

SUBSTANCE ABUSE HOSPITAL ADMISSIONS

- Prescription drug related inpatient admissions increased by 30% in 2007 and have remained flat for 2008.
- Tobacco related inpatient admissions have increased by 67% from 2005 to 2008.
- Emergency department (ED) alcohol related visits have increased by 38% from 2006 to 2008.
- Since 2005 the rate of prescription drug related admissions has been running at approximately the same level as the rest of the stats.
- Currently, statewide ED comparative data is not available.

Hospital Admissions ⁶	2006		2007		2008	
	Michigan	Calhoun	Michigan	Calhoun	Michigan	Calhoun
Per 100,000 Population						
Alcohol (IP)	538	511	558	531	563	510
Illegal Drugs (IP)	592	515	603	525	594	476
Prescription Drugs (IP)	118	117	126	152	134	144
Tobacco (IP)	1736	1690	1710	1736	1802	1970
Alcohol (ED)	n/a	751	n/a	857	n/a	1034
Illegal Drugs (ED)	n/a	557	n/a	535	n/a	663

Sources:

1. Calhoun County 37th Judicial Circuit Court Family Division
2. Calhoun County Medical Examiner, 2009
3. Calhoun Dept. of Public Health, 2009
4. Kalamazoo Mental Health Substance Abuse Services, 2009
5. MI Dept. of Community Health, 2007-2008
6. Michigan Hospital Association
7. Michigan Liquor Control Commission
8. Michigan State Police
9. Michigan Profile for Healthy Youth (MiPHY), 2008
10. Narcotics Anonymous and Alcoholics Anonymous, Michigan Area 34, District 5, 2009
11. Office of Highway Safety and Planning
12. Pacific Institute for Research and Evaluation (PIRE), October 2008
13. Substance Abuse Council, *a drug prevention coalition serving Calhoun County*, 2008-2009
14. Substance Abuse Prevention Services, Tobacco Compliance/Synar 2009

