



# Substance Abuse Council Outcomes Data 2011





# TABLE OF CONTENTS

INTRODUCTION.....	3
YOUTH	
Alcohol MiPHY data for Calhoun County.....	4/5
Tobacco MiPHY data for Calhoun County.....	6
Prescription Drug Abuse MiPHY data for Calhoun County.....	7
Marijuana MiPHY data for Calhoun County.....	8
Court Data.....	9
ADULTS	
Adult Survey.....	10/11
Adult Heavy/Binge Drinking.....	12
Drunk Driving Arrests.....	12
Alcohol-Induced Mortality Rates.....	12
Alcohol and Drug Involved Traffic Crashes.....	13
METHAMPHETAMINE.....	
Nationwide Meth Lab Incidents Map.....	14
Meth Lab Incidents.....	15
ALCOHOL RETAIL COMPLIANCE.....	
SUBSTANCE ABUSE HOSPITAL ADMISSIONS.....	
SUBSTANCE ABUSE RELATED DEATHS.....	
TREATMENT.....	
RECOVERY.....	
SAC'S PROGRAMS AND SERVICES.....	
ACKNOWLEDGEMENTS.....	



# INTRODUCTION



The Substance Abuse Council (SAC) is a 501(c)(3) organization serving the community for over 25 years. Realizing our purpose of achieving greater community health is made possible with collaborative partnerships amongst schools, youth and religious organizations, healthcare, government agencies and law enforcement, media, local businesses, community organizations, foundations; parents and youth.

To ensure program effectiveness, SAC staff adhere to the professional competency standards set forth by MCBAP (Michigan Certification Board of Addiction Professionals), utilize the federally recommended Strategic Prevention Framework and best-practice model programs from the National Registry of Evidence-based Programs and Practices (NREPP). Following these guidelines and selecting prevention programs proven to be effective allows the Substance Abuse Council to best utilize available resources and achieve greater community-wide impact.

SAC has published substance abuse related data free of charge to the community for the past four years to provide a clear picture of substance abuse issues in Calhoun County. This compilation, formerly known as "Calhoun County Substance Abuse Data," has been revised to include outcome data related to the Substance Abuse Council's programming and activities, comparative analysis of prior year data, and community feedback.

This report is organized by Youth issues and Adult issues with graphs and charts showing the data and trends (if available), an analysis of the data, outcomes of activities and the future actions SAC plans to take based on the data. Youth prevalence data from the Michigan Profile for Healthy Youth (MiPHY) and adult use data collected this year will serve as a baseline for future reports, allowing the 2012 report to provide trend data and measure the effectiveness of our programs and services. SAC is committed to providing these outcomes to our funders, collaborative partners and community.

SAC would like to thank Dr. Raymond Higbea of Bronson Battle Creek, Sarah Barnhart of Calhoun County Health Department and the members of the Substance Abuse Council's Data Committee for volunteering their efforts and expertise on this project.



## YOUTH

The Office of National Drug Control Policy (ONDCP) and the Substance Abuse and Mental Health Services Administration (SAMHSA) identified four core measures to evaluate and reduce substance abuse among youth: past 30 day use, average age of use onset, perceived risk of use, and perceived parental disapproval of use. To examine youth substance abuse in Calhoun County, data from the Michigan Profile for Healthy Youth (MiPHY) was analyzed. MiPHY surveys assess these four core measures as well as other indicators of risk and protective factors for 7th, 9th, and 11th grades. MiPHY surveys are conducted every two years. For more information about the MiPHY survey and results, visit [www.michigan.gov/miphy](http://www.michigan.gov/miphy).

### Alcohol

The chart below shows student response to the four core measures regarding alcohol. As the perceived parental disapproval rates decrease from 7th to 9th and 9th to 11th grades, reported use of alcohol in the past 30 days increases respectively. This progressive pattern is also seen in binge drinking rates, with an alarming 21.5% of 11th graders reporting binge drinking within 30 days of taking the survey. These statistics highlight the importance of regular communication about substance abuse between youth and their parents/care-givers.

MiPHY 2010—Calhoun County Schools-ALCOHOL <sup>10</sup>									
	7				9 & 11				
	Black	White	Hispanic	All Students 7th	Black	White	Hispanic	All Students 9th	All Students 11th
<b>ATTITUDES TOWARD ALCOHOL</b>									
% reported sort of easy or very easy to get alcohol	39.0%	34.1%	41.8%	35.5%	62.0%	64.4%	67.5%	59.0%	71.8%
% reported regular alcohol use to be a moderate/great risk	55.3%	70.7%	60.1%	67.4%	68.5%	71.4%	69.0%	70.6%	70.3%
% reported their parents felt regular alcohol use to be wrong/very wrong	93.7%	94.5%	89.3%	93.5%	85.5%	84.8%	81.4%	88.8%	78.5%
<b>ALCOHOL USE</b>									
% ever tried alcohol (lifetime)	32.9%	16.9%	16.7%	19.1%	48.4%	50.4%	63.0%	43.1%	61.5%
% had their first drink of alcohol, other than a few sips, before age 11 (7th grade) or 13 (9th & 11th grades)	17.1%	8.9%	7.9%	9.9%	16.8%	15.0%	25.2%	18.8%	13.5%
Average age of first alcohol use (Note: Not a percentage)	10.1	10.0	10.1	10.1	12.9	13.2	12.8	12.3	13.9
% had one drink of alcohol during the past 30 days	9.7%	6.7%	12.0%	7.7%	19.2%	22.7%	32.3%	16.8%	31.6%
% had five or more drinks of alcohol in a row, that is, within a couple of hours, during the past 30 days	1.9%	3.2%	5.6%	3.3%	8.2%	15.0%	19.4%	9.6%	21.5%



Substance Abuse Council

## Alcohol

The Substance Abuse Council (SAC) addresses underage drinking prevention through direct programming, media campaigns, compliance checks and collaboration. In the past twelve months SAC has:

- Provided LifeSkills prevention programming to 101 6th grade students at Springfield Middle School. After completing the LifeSkills program, evaluation results indicate students are more likely to refuse smoking, drinking, and taking drugs 83% on post-test compared to 59% on pre-test. However, student response to questions related to honesty and anxiety indicate a need for additional support in these areas
- Provided Towards No Drug Abuse (TND) to 18 Community High School students
- Coordinated and conducted two county-wide alcohol compliance checks among area alcohol retailers resulting in a compliance rate of 97%
- Implemented Parents Who Host Lose The Most media campaign, increasing awareness of the consequences of supplying alcohol to minors
- Conducted Sticker Shock campaign with 27 alcohol retailers in the city of Battle Creek
- Coordinated annual Drug Free Poster Contest for 5<sup>th</sup>, 6<sup>th</sup> and 7<sup>th</sup> grade students with nearly 400 youth participating
- Provided support and coordination to sustain and expand Lakeview High School's Above the Influence Club, growing club membership from 10 to 22 youth
- Provided prevention information in partnership with the Homer Coalition to Homer high school students prior to prom and graduation season

In 2009, SAC was awarded the Sober Truth on Preventing Underage Drinking Act (STOP Act) grant from the national Substance Abuse and Mental Health Services Administration (SAMHSA). The purpose of grant initiative is to prevent and reduce alcohol use among youth in communities throughout the United States and strengthen collaboration among sectors within the community.

With this grant SAC has addressed underage drinking predominantly through the support and coordination of the Above the Influence (ATI) Club. Underage drinking prevention is addressed by the youth group and its advisors through various activities, including:

- volunteering at community houses, the Charitable Union and participating in other community service projects
- working with AccessVision in developing public service announcements
- providing information and education at local health fairs

In 2010, SAC will continue its efforts to prevent and reduce underage drinking by increasing youth and community participation in underage drinking prevention activities, continued support of Above the Influence youth coalition activities; collaborating with neighborhood groups and retailers to address retail placement of alcohol; working with law enforcement to provide a presence at school and community functions; continuing alcohol compliance checks and media campaigns; and providing leadership and capacity building for the newly formed Homer Coalition.

## Tobacco

The chart below shows student response to the four core measures regarding tobacco. Student perception of parental disapproval is high, approximately 90% at all levels. Youth tobacco use is less than alcohol but increases as students get older. For example, 3.9% of 7th graders reported smoking in past 30 days compared to 16.3% in 11<sup>th</sup> grade; comparable to national data from the Centers for Disease Prevention for 2009, which indicates 5.2% of middle school students and 17.2% of high school students are current smokers. Age of onset for smoking is slightly lower than that for drinking alcohol, confirming the idea that smoking is a gateway drug.

MiPHY 2010—Calhoun County Schools-TOBACCO <sup>10</sup>									
	7				9 & 11				
	Black	White	Hispanic	All Students 7th	Black	White	Hispanic	All Students 9th	All Students 11th
<b>ATTITUDES TOWARD TOBACCO</b>									
% reported sort of easy or very easy to get cigarettes	44.9%	30.5%	40.7%	34.0%	60.1%	59.8%	66.7%	54.6%	69.9%
% reported regular cigarette use to be a moderate/great risk	58.3%	81.8%	72.7%	77.4%	71.0%	86.7%	71.9%	81.4%	84.4%
% reported their parents felt cigarette use to be wrong/very wrong	92.0%	98.0%	93.6%	96.6%	91.8%	91.7%	88.5%	93.0%	89.0%
<b>TOBACCO USE</b>									
% ever smoked a whole cigarette (lifetime)	13.8%	8.0%	7.6%	9.1%	16.5%	26.4%	33.1%	22.3%	31.8%
% smoked a whole cigarette for the first time before age 11 (7th grade) or 13 (9th & 11th grades)	9.4%	3.7%	4.5%	5.1%	10.1%	10.8%	16.5%	11.9%	11.5%
Average age of first tobacco use (Note: Not a percentage)	9.4	10.4	9.9	10.1	11.5	12.7	12.0	11.7	13.1
% ever smoked cigarettes on one or more of the past 30 days	4.7%	3.9%	5.2%	3.9%	5.3%	13.2%	10.5%	9.8%	16.3%
% smoked cigarettes on 20 or more of the past 30 days	0%	0.6%	0.7%	.5%	2.1%	5.8%	3.8%	3.9%	7.6%

In the past year, SAC has partnered with the Calhoun County Cancer Control Coalition and Lung Cancer/Tobacco Prevention subcommittee to:

- educate high school youth about tobacco prevention and smoking cessation
- support the semi-annual Fresh Start Smoking Cessation program at Bronson Battle Creek
- worked with the Calhoun County Department of Public Health to monitor local compliance of Michigan’s Smokefree Law
- provided tobacco prevention and cessation information at various community events

Moving forward, SAC will continue these collaborative efforts, as well as develop a smoking cessation group at Battle Creek Central High School focusing on stress management; enhance access to cessation resources for high risk populations and conduct annual community events focused on tobacco use cessation and prevention.



Substance Abuse Council

## Prescription Drugs

Prescription drug abuse is the nation's fastest growing drug problem. 2010 Monitoring the Future data indicates about 5% of 12th grade students have used OxyContin and 2.5% have used Ritalin. Locally, middle school students use higher levels of prescription drugs and painkillers without a doctor's prescription than high school students. National data from SAMSHA attributes these trends to the ease of access of prescription and over-the-counter medications which are primarily obtained from family members and friends.

MiPHY 2010—Calhoun County Schools-PRESCRIPTION DRUGS <sup>10</sup>				
	7			
	Black	White	Hispanic	All Students 7th
% EVER took a prescription drug such as Ritalin, Adoral or Xanax without a doctor's prescription	7.1%	6.1%	3.6%	5.6%
% EVER took painkillers such as OxyContin, Codeine, Percocet or Tylenol III without a doctor's prescription	14.2%	13.0%	15.0%	13.3%

MiPHY 2010—Calhoun County Schools-PRESCRIPTION DRUGS <sup>10</sup>					
	9 & 11				
	Black	White	Hispanic	All Students 9th	All Students 11th
% took a prescription drug such as Ritalin, Adoral or Xanax without a doctor's prescription one or more times during the past 30 days	1.4%	4.9%	3.2%	2.8%	6.2%
% took painkillers such as OxyContin, Codeine, Percocet or Tylenol III without a doctor's prescription one or more times during the past 30 days	4.7%	8.9%	11.5%	9.4%	8.5%

To address over-the-counter and prescription drug abuse, SAC has:

- Collaborated with the Drug Enforcement Administration and American Medicine Chest Challenge campaign to implement three Over-the-Counter and Prescription Drug Take Back events throughout Calhoun County collecting over 375 pounds of medication, equivalent to approximately 187,500 500 milligram pills
- Provided over-the-counter and prescription medication abuse prevention information to the community through televised appearances with Be Scene on Air and the NAACP on Accessvision, as well as filming for State Representative Kate Segal's web site
- Expanded SAC's existing Meth Task Force to include medicine abuse, increasing awareness, prevention and outreach

Prevention efforts will continue through provision of prescription drug abuse training for professionals at a November 2011 state workshop; trainings and presentations for community members; assistance to pharmacies and physicians in the tracking and monitoring of prescription drugs; providing proper medication disposal venues and permanent collection box; Lock Your Meds media campaign, and communication of proposed legislative action to require prescriptions for pseudoephedrine, a precursor to methamphetamine production.

## Marijuana

The chart below shows student response to the four core measures regarding marijuana. Fewer students perceived marijuana use to be of moderate or great risk than use of cigarettes or alcohol. 2010 Monitoring the Future Survey nationwide statistics reported 21.7% of high school students had used marijuana in the past 30 days, similar to the 2010 MiPHY average of 17.1%. Recent legislation legalizing medical use of marijuana is expected to further diminish youth perception of risk associated with marijuana use.

MiPHY 2010—Calhoun County Schools-MARIJUANA <sup>10</sup>									
	7				9 & 11				
	Black	White	Hispanic	All Students 7th	Black	White	Hispanic	All Students 9th	All Students 11th
<b>ATTITUDES TOWARD MARIJUANA</b>									
% reported sort of easy or very easy to get marijuana	30.8%	12.6%	20.9%	16.7%	66.8%	50.1%	61.6%	46.9%	63.0%
% reported regular marijuana use to be a moderate/great risk	54.7%	75.3%	62.2%	70.7%	56.6%	69.0%	61.0%	67.6%	63.1%
% reported their parents felt marijuana use to be wrong/very wrong	93.6%	98.1%	92.8%	96.6%	86.0%	92.4%	84.0%	91.8%	89.1%
<b>MARIJUANA USE</b>									
% ever tried marijuana (lifetime)	12.3%	4.5%	5.1%	5.7%	44.8%	26.5%	43.2%	25.1%	38.4%
% tried marijuana before age 11 (7th grade) or 13 (9th & 11th grades)	5.8%	1.1%	3.7%	2.1%	11.0%	6.3%	15.5%	9.3%	6.2%
Average age of first marijuana use (Note: Not a percentage)	10.4	11.0%	n/a	10.7%	13.3	13.6	12.9	12.5	41.3
% used marijuana during the past 30 days	13.0%	2.9%	4.3%	.4%	27.1%	13.9%	25.6%	14.4%	19.7%

To address marijuana related substance abuse issues, SAC has:

- hosted a presentation for coalition partners highlighting marijuana and medical marijuana with Michigan prosecutor Ken Stecker serving as guest speaker
- provided youth education and outreach through SAC's "Marijuana Jeopardy" game
- assisted local government development of medical marijuana ordinances by providing educational presentations and materials and remaining accessible for consultation
- hosted the viewing of a webinar for community members and facilitate discussions to develop future prevention plans

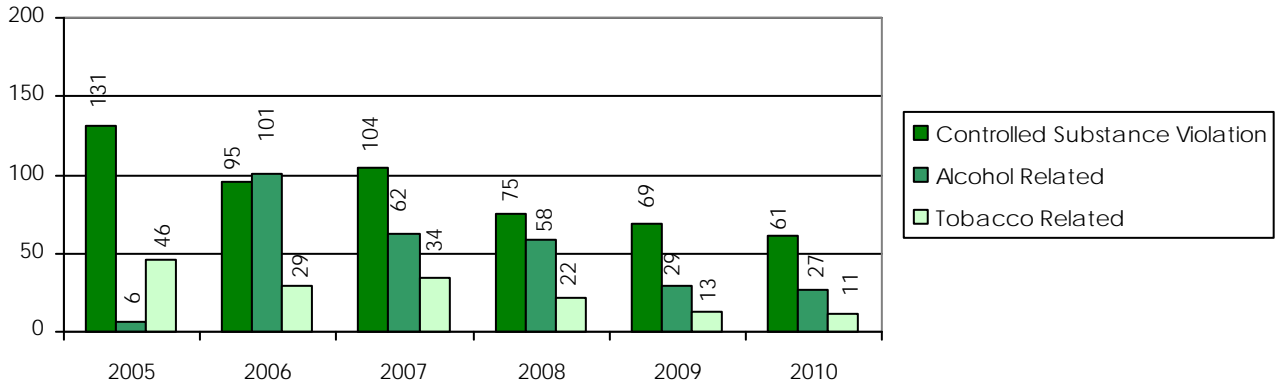
In the next year, SAC will mobilize a Marijuana Task Force to identify strategies and activities for effective marijuana use prevention, continue to provide educational resources, and serve as a resource to local government wishing to enact ordinances cognizant of overall community impact.



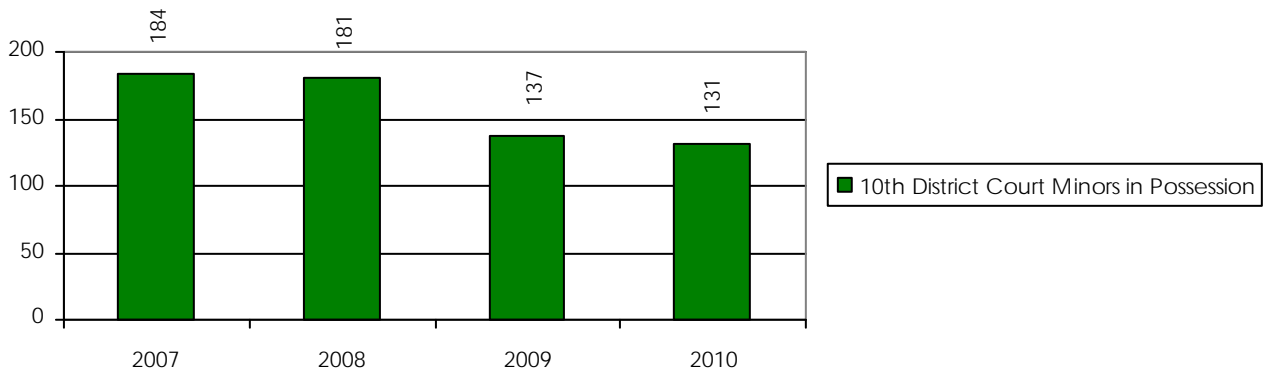
## Court Data

Data show a decrease in juvenile referrals for drug, alcohol, and tobacco related offenses in youth age 16 and younger as well as a decrease in minor (age 16-20) possession of alcohol.

### 37TH JUDICIAL CIRCUIT COURT FAMILY DIVISION <sup>1</sup> JUVENILE DATA



### 10TH DISTRICT COURT <sup>2</sup> MINORS IN POSSESSION OF ALCOHOL



To assist in the reduction of juvenile substance abuse-related offenses, SAC has:

- continued semi-annual alcohol compliance checks
- provided education about the social and legal ramifications of selling alcohol to minors for local vendors
- implemented the Towards No Drug Abuse program (TND) at Calhoun Community High School for 18 high risk youth
- facilitated monthly drug prevention education for the Young Marines

In the coming year, SAC will collaborate with juvenile probation officers to refer qualifying families to the Celebrating Families Program. Celebrating Families provides weekly opportunities for families to positively interact while developing parenting and family skills that break the cycle of addiction and prevent future substance abuse.



# ADULTS

## Adult Survey

Parents, caregivers, and other adults have a profound impact on youth substance abuse and prevention, both positively and negatively. In 2011, the Substance Abuse Council recognized a need to collect substance abuse related data from Calhoun County's adult population and partnered with data professionals to develop an adult survey analyzing substance use and perceptions, similar to those in the Michigan Profile for Healthy Youth survey. Data collected from 479 completed surveys illustrates connections between adult and youth use. For example, 17% of adults have taken prescription painkillers in the past 30 days with 13% of 7<sup>th</sup> grade students report having used a painkiller not prescribed to them. Both the 2010 MiPHY survey and the adult survey conducted by SAC indicate most incidents of first use occur around age 13.

In the past 30 days, percentage of people that have taken or used: <sup>13</sup>			
	Yes	No	N
Alcohol	49%	51%	458
Tobacco	25%	75%	477
Smokeless Tobacco	4%	96%	469
Medical Marijuana	3%	97%	470
Marijuana	5%	95%	475
Methamphetamine	1%	99%	471
Prescription Painkillers	17%	83%	475
Prescription Anti-depressants	15%	85%	474
Inhalants eg. glue, spray paint	1%	99%	470
Cocaine	1%	99%	473
Heroin	1%	99%	472

Age of First Use <sup>13</sup>							
	Under 10	10-12	13-15	16-18	19-20	21 & over	N
Alcohol	2%	5%	19%	33%	16%	25%	254
Tobacco	3%	13%	27%	38%	7%	12%	142
Smokeless Tobacco	4%	7%	15%	37%	15%	22%	27
Medical Marijuana	0%	0%	15%	25%	10%	50%	20
Marijuana	0%	13%	28%	33%	9%	17%	53
Methamphetamine	0%	0%	8%	17%	25%	50%	12
Prescription Painkillers	3%	3%	16%	18%	12%	48%	61
Prescription Anti-depressants	0%	4%	7%	11%	14%	64%	56
Inhalants eg. glue, spray paint	0%	0%	33%	0%	0%	67%	6
Cocaine	0%	0%	6%	18%	38%	38%	16
Heroin	0%	17%	0%	17%	17%	49%	6



Substance Abuse Council

## Adult Survey

How wrong do you think it is for someone your age to: <sup>13</sup>						
	Very Wrong	Wrong	A little bit wrong	Not wrong at all	No Opinion	N
Drink beer, wine or hard liquor regularly?	19%	19%	25%	28%	9%	474
Smoke cigarettes?	33%	23%	18%	19%	7%	471
Smoke marijuana?	46%	22%	15%	8%	9%	475
Take painkillers NOT prescribed to you?	65%	23%	6%	1%	5%	468
Take anti-depressants NOT prescribed to you?	59%	22%	4%	1%	4%	462
Use inhalants eg. glue, spray paint?	76%	17%	2%	1%	4%	475
Use heroin?	82%	12%	1%	1%	4%	471
Use cocaine?	82%	12%	1%	1%	4%	471

The table below indicates more education emphasizing the importance of securing alcohol, drugs, and household chemicals likely to be abused by youth is needed. Reducing access to these substances is one of the most effective substance abuse prevention strategies.

If you have any of these substances in your home, are they locked up or secured? <sup>13</sup>			
	Yes	No	N/A
Alcohol	29%	41%	30%
Tobacco	12%	31%	57%
Marijuana	7%	13%	80%
Painkillers	19%	25%	56%
Anti-depressants	16%	17%	67%
Inhalants	11%	15%	74%

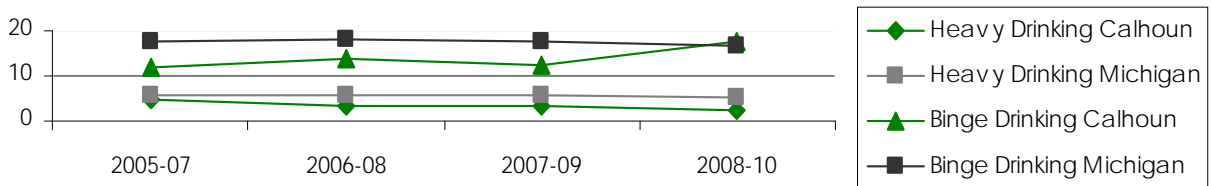
Adult Survey data collected in 2011 will serve as a baseline for establishing trends through comparison with future survey data. This information will help SAC measure program success and identify needs and opportunity to enhance youth prevention efforts.

In the next year, SAC will conduct a Lock Your Meds campaign to educate the community on the importance of both monitoring and securing medications; continue hosting Take Back events providing free and proper disposal of over-the-counter and prescription medications; disseminate medication lock boxes to targeted senior populations; and continue outreach to parents and care givers through community events, supporting the recovering community through its Celebrate Recovery Committee, and providing prevention programming for families inclusive of both the youth and adults.

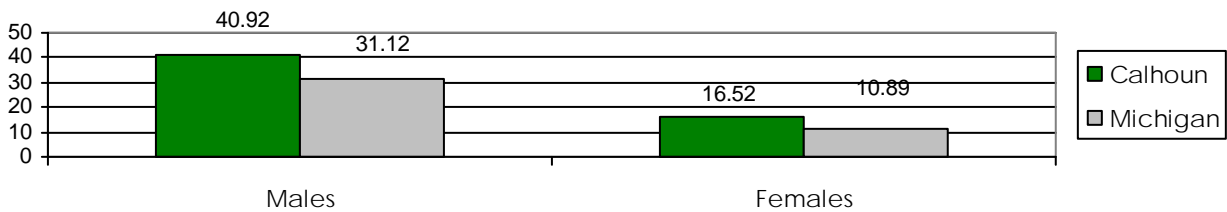
## Alcohol

Although the percentage of adults who reported engaging in heavy drinking has decreased both for Calhoun County and for the state; adult binge drinking rates have increased in the county, approaching the state average of 16.6%. The number of both male and female drunk driving arrests in Calhoun County is higher than the state average. Consequently, alcohol - induced mortality rates continue to remain higher in Calhoun County than the rest of the state. These statistics indicate need for the continuation and expansion of prevention activities and recovery resources to positively impact behavioral changes and community norms.

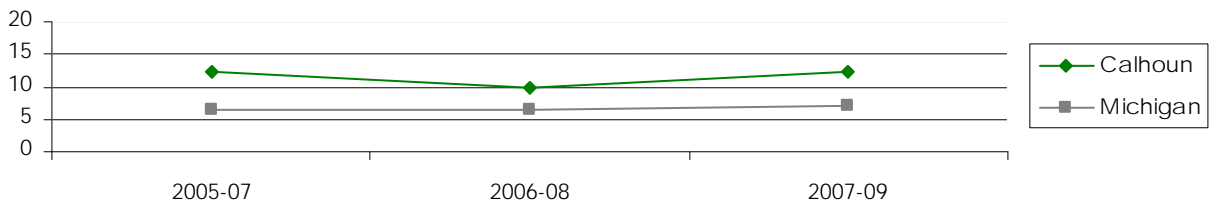
**PERCENT OF ADULTS WHO REPORTED ENGAGING IN HEAVY AND BINGE DRINKING** 3, 6



**2010 DRUNK DRIVING ARRESTS (Per 10,000 population)** 3, 6



**ALCOHOL-INDUCED MORTALITY RATE (per 100,000 population)** 3, 6



Collaborating with Kellogg Community College (KCC) was one of the many ways SAC sought to reduce binge drinking. Through this partnership, SAC:

- worked with the Healthy Choices Leadership Organization to provide an alcohol free event highlighting the ability to have fun without alcohol and drugs
- implemented the Domino Campaign which teaches individuals how to best assess the amount of alcohol they are consuming, and provides guidelines for responsible consumption of alcohol
- provided educational materials and workshops in conjunction with KCC events

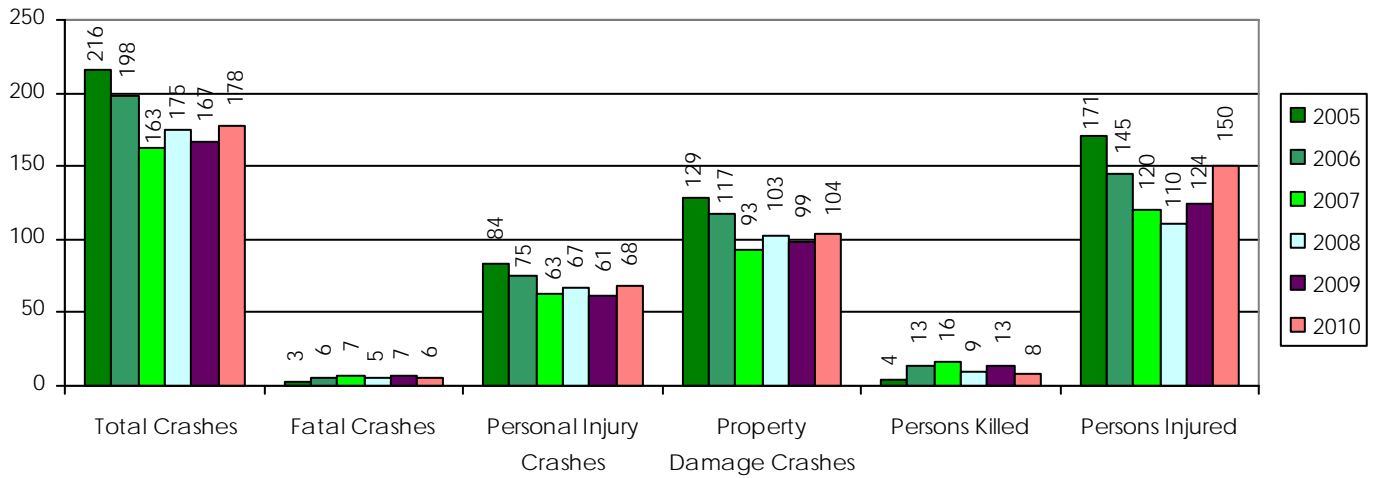


**Substance Abuse Council**

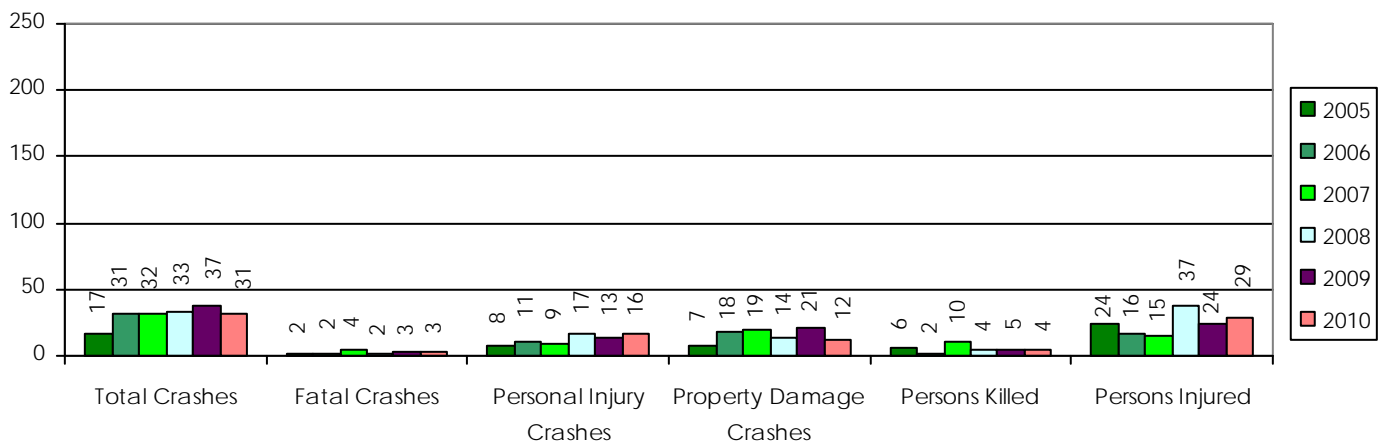
## Alcohol and Drug Involved Traffic Crashes

Although alcohol-related traffic crashes, including injuries, damages and fatalities, have decreased slightly over the past several years, drug-related crashes have increased. 28% percent of adults surveyed in SAC’s 2011 Adult Survey reported drinking alcohol regularly to being not wrong at all compared to 1% reporting taking other drugs to be not wrong at all. The disparity between perceptions of alcohol and drug use may help explain why alcohol-related crashes are almost six times those that are drug-related.

**ALCOHOL INVOLVED TRAFFIC CRASHES <sup>11</sup>**



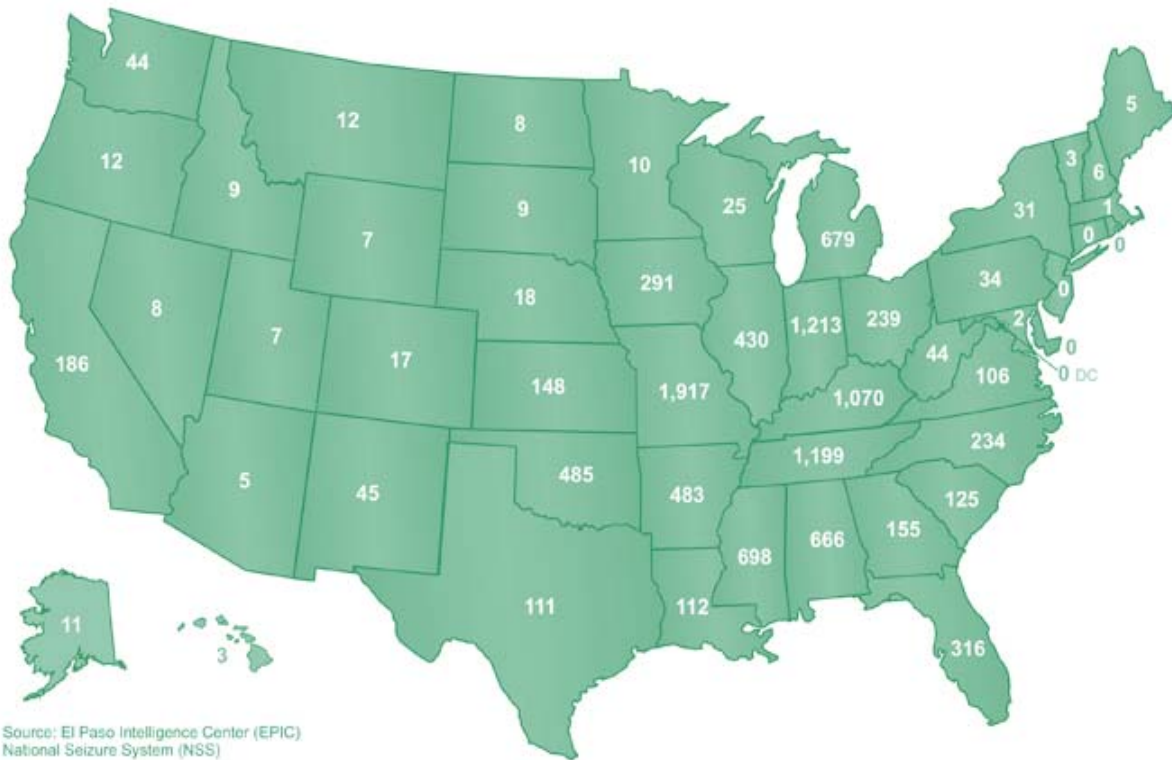
**DRUG INVOLVED TRAFFIC CRASHES <sup>11</sup>**



# METHAMPHETAMINE

Calendar Year 2010  
Total: 11,239

Total of All Meth Clandestine Laboratory Incidents  
Including Labs, Dumpsites, Chem/Glass/Equipment



Michigan had the 6th highest number of methamphetamine lab incidents in the nation, according to 2010 data. Because meth can be produced quickly, in “labs” as small as a soda bottle, detection of meth production remains challenging.

Many components of meth production serve other common purposes. Unless these common household chemicals and products are purchased in abnormally large quantities, the likelihood retailers will report suspected meth production related activity is minimal. The toxicity of methamphetamine production poses great threat to residents and the environment, leaving law enforcement and property owners struggling to find financial resources to properly clean up meth labs.

Lab-related explosions have caused property damage, injury and death; with a high number of lab busts discovering children present in the home and exposed to these dangers.

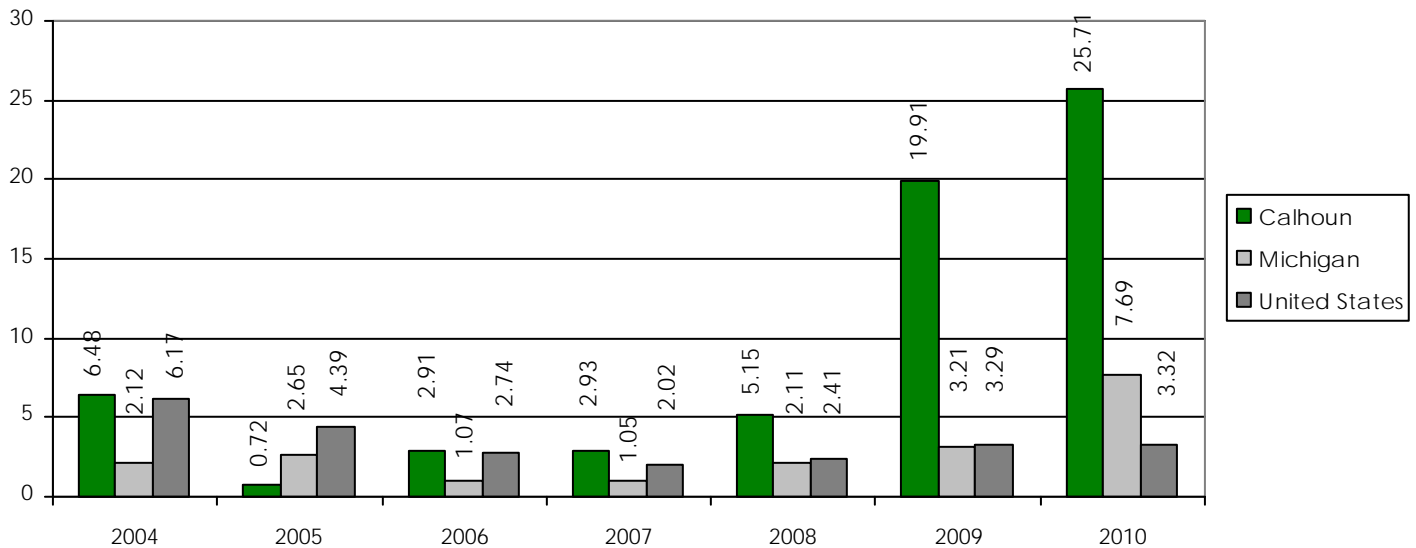


Substance Abuse Council

# METHAMPHETAMINE

Steady increases were seen in the number of both Michigan and nationwide meth lab incidents beginning in 2008, with alarming increases in Calhoun County. Recently, a rise in the number of meth labs seizures has occurred due to "smurfing," a term describing bulk purchase of pseudoephedrine for non-therapeutic reasons and smaller, more mobile labs.

**METH LAB INCIDENTS <sup>4,9</sup>  
PER 100,000 POPULATION**



In the past twelve months, SAC has addressed meth-related issues by:

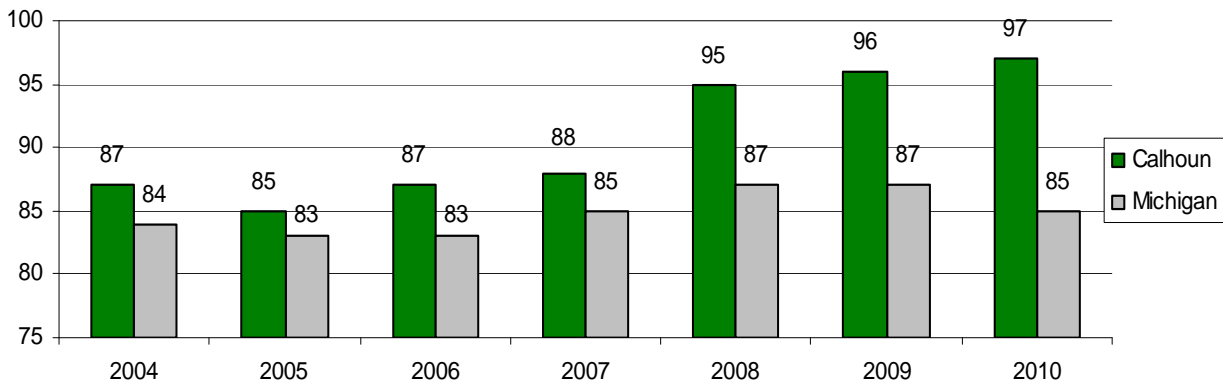
- presenting 6 meth awareness workshops for 141 medical staff, community professionals and business employees in collaboration with the Calhoun County Sheriff's Department
- providing leadership to the Calhoun County Meth/Medicine Prevention Task Force, created in 2002
- actively participating in the State Meth Task Force
- educating the community about the benefits of returning pseudoephedrine to prescription status
- working with retailers to impose practices to limit the sale of components used to manufacture methamphetamine

SAC will continue conducting meth awareness workshops, providing education to community members, retailers, organizations and local government. The Meth Task Force will also explore cost effective strategies and solutions to fund and expand lab clean up efforts.

## ALCOHOL RETAIL COMPLIANCE

Alcohol compliance checks monitor the rate of illegal sale of alcohol to minors. If a retailer sells to a minor during the compliance check, whether or not identification was requested prior to the sale of alcohol is documented to identify need for training and education. SAC conducts compliance checks bi-annually in collaboration with local law enforcement and the Calhoun Area Career Center. Since SAC began conducting county wide compliance checks in 2004, Calhoun County's compliance rates have been consistently higher than state compliance rates. In 2010, 4 of 338 retailers checked sold to a minor, with 2 of 4 examining the minor's identification prior to the sale; comparative to state data indicating 57% of retailers selling alcohol to minors examining identification prior to sale. Effectiveness of this collaborative effort is evident in the current compliance rate of 97%.

ALCOHOL RETAIL COMPLIANCE PERCENTAGE RATES 8, 13



To prevent the illegal sale of alcohol to minors, and support responsible alcohol sale and training for vendors over the last year, the Substance Abuse Council has:

- coordinated bi-annual compliance check operations in the last year with 97% of the 338 retailers checked being in compliance and not selling to minors
- provided 35 vendor education visits with establishments incurring compliance check violations
- organized and implemented "Sticker Shock" campaigns with 27 retailers highlighting the legal consequences associated with providing alcohol to minors
- served as an educational resource to vendors seeking to prevent underage drinking

To ensure future compliance and responsible sale of alcohol, SAC will continue to provide educational resources to alcohol retailers and maintain the collaborative relationships with law enforcement, alcohol retailers, the Calhoun Area Technology Center, and community.



Substance Abuse Council

## SUBSTANCE ABUSE HOSPITAL ADMISSIONS

Alcohol-related inpatient admissions for the state remain fairly consistent, however, in comparison, the number of Calhoun County alcohol-related inpatient admissions increased significantly in 2009 and remained high in 2010. Because use of alcohol is typically a socially accepted coping mechanism, it is often a symptom of underlying medical and mental conditions. Therefore, alcohol generally is the secondary diagnosis needing to be addressed in order to treat primary conditions individuals present with. Some alcohol related admissions are reported as primary diagnoses, such as cirrhosis of the liver.

Tobacco-related inpatient admissions have steadily increased for both the state of Michigan and Calhoun County. Calhoun County surpassed the state of Michigan in the number of Tobacco-related inpatient admissions per 100,000 in 2007; a trend continuing to the present date.

Prescription drug-related inpatient admissions for Calhoun County increased from 2009 to 2010, while prescription drug-related inpatient admissions for the state of Michigan decreased during the same period.

Illegal drug-related inpatient admissions for Calhoun County also increased from 2009 to 2010 by 90 admissions, while the illegal drug-related inpatient admissions for the state of Michigan over the same period only increased by 1 admission.

The significant increase in Calhoun County emergency department admissions for both alcohol and illegal drugs from 2009 to 2010 indicates immediate need for increased prevention efforts.

In Patient Hospital Admissions <sup>7</sup> per 100,000 population								
	2003	2004	2005	2006	2007	2008	2009	2010
Calhoun Alcohol	556	468	494	511	531	510	676	661
Michigan Alcohol	503	524	533	541	563	569	610	592
Calhoun Tobacco	1154	1416	1180	1690	1736	1970	2200	2509
Michigan Tobacco	1357	1509	1673	1748	1725	1820	1914	1878
Calhoun Prescription Drugs	117	132	104	117	152	144	113	137
Michigan Prescription Drugs	94	108	111	119	127	135	196	173
Calhoun Illegal Drugs	525	453	545	515	525	476	439	529
Michigan Illegal Drugs	440	499	553	596	609	600	450	451

Emergency Department Hospital Admissions <sup>7</sup> per 100,000 population								
	2003	2004	2005	2006	2007	2008	2009	2010
Calhoun Alcohol	770	735	748	751	857	1034	761	915
Calhoun Illegal Drugs	689	658	551	557	535	663	428	660

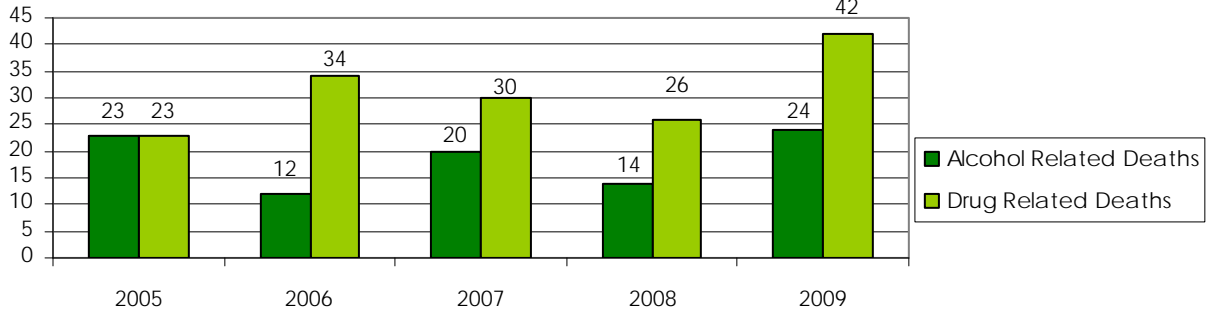
As SAC continues to monitor youth and adult use and abuse of alcohol, tobacco, prescription and illegal drugs, the organization will continue to provide prevention education, utilize and implement best practice model programs such as Life Skills Training and Towards No Drug Abuse, and maintain the collaborative relationships necessary to data collection and program implementation.



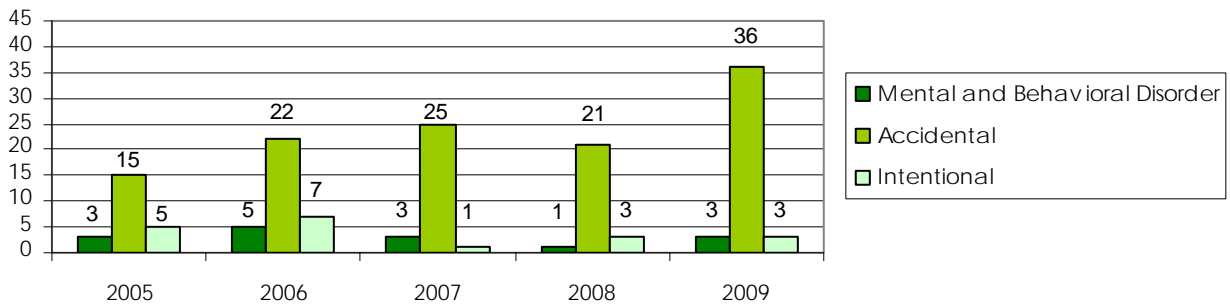
# SUBSTANCE ABUSE RELATED DEATHS

Significant increases in Calhoun County alcohol and drug related deaths, accidental drug related deaths, and chronic disease relative to alcohol from 2008 to 2009 also indicate the immediate need for sustained and more intensive substance abuse prevention services.

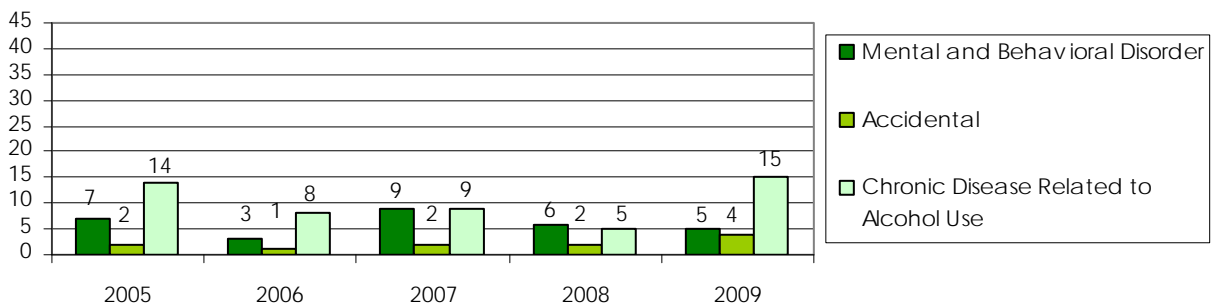
**SUBSTANCE ABUSE RELATED DEATHS IN CALHOUN COUNTY <sup>3</sup>**



**DRUG RELATED DEATHS IN CALHOUN COUNTY BY YEAR AND INTENT <sup>3</sup>**



**ALCOHOL RELATED DEATHS IN CALHOUN COUNTY BY YEAR AND INTENT <sup>3</sup>**



## TREATMENT

In FY 2009-2010, 1982 individuals presented need for alcohol or drug treatment in Calhoun County. The top two reasons individuals presented for treatment in 2008-09 and 2009-10 were alcohol and marijuana. Actual need for substance abuse and addiction services cannot be accurately reflected in collected data as many individuals do not seek treatment due to lack of insurance, financial resources, and the social stigmas associated with seeking treatment.

Substance Abuse Treatment <sup>5, 14</sup>				
Drug name	Total Number 08-09	Percent 08-09	Total Number 09-10	Percent 09-10
Alcohol	812	48%	731	37%
Marijuana/hashish	318	19%	571	29%
Cocaine	183	11%	113	6%
Other*	183	11%	250	12%
Crack Cocaine	57	3%	76	4%
Heroin	34	2%	107	5%
Methamphetamines	32	2%	82	4%
Methadone (illicit)	26	2%	30	2%
Hallucinogens	23	1%	14	1%
Ecstasy (MDMA,MDA)	10	1%	7	0%
Inhalants	1	0%	1	0%
<b>Total</b>	<b>1679</b>	<b>100%</b>	<b>1982</b>	<b>100%</b>

\*Other includes: synthetic opioids, barbiturates, sedatives, tranquilizers, benzodiazepines, amphetamines and over-the-counter medicines.

Due to the continuously increasing trend of individuals presenting need for treatment of alcohol and marijuana abuse and addiction, SAC will:

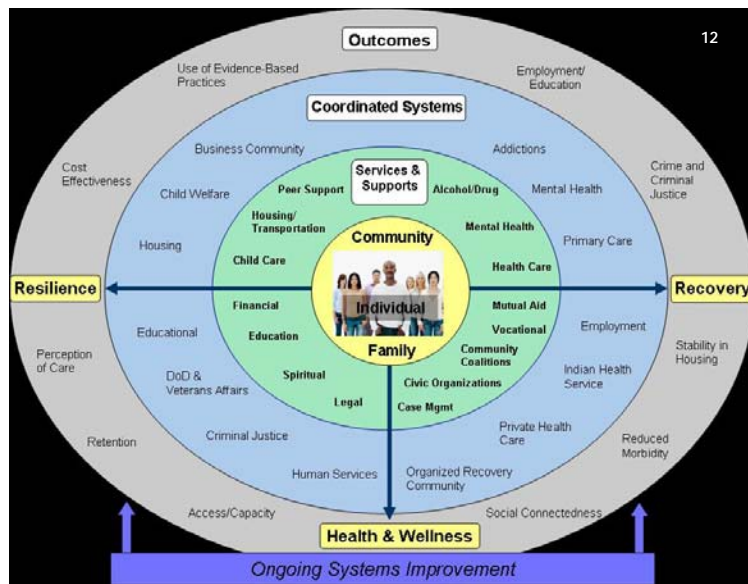
- continue collaboration with treatment professionals to support and develop strategies to decrease use of alcohol, marijuana, and other substance
- maintain and expand current network with substance abuse treatment and recovery service providers
- form a Marijuana Task Force to engage the community to assess needed prevention strategies
- continue support to high schools and Kellogg Community College to provide information and education regarding the risks of alcohol and other drug use
- provide ongoing prevention programming, strategies, and opportunities for youth, adults, and families in Calhoun County
- maintain positive relationships with funders and community partners
- research and pursue future funding and collaborative opportunities to sustain and expand prevention and treatment resources in Calhoun County



# RECOVERY

In 2004, SAC formed the Celebrate Recovery Committee to address the cyclical nature of substance abuse and acknowledge the importance of both adequate and accessible recovery resources to prevent further substance abuse. Members of the committee represent various community sectors supportive to sustaining recovery (treatment professionals, Calhoun County Drug Court staff and participants, Calhoun County Juvenile Probation staff, 12-Step Program supporters, faith based community, neighborhood-based leadership, providers of service to the recovering community, individuals in recovery and their family and friends).

In recent years, state and federal governments have been developing the Recovery Oriented Systems of Care (ROSC) model to improve substance abuse recovery approaches and systems. *“Recovery-oriented systems support person-centered and self-directed approaches to care that build on the strengths and resilience of individuals, families and communities to take responsibility for their sustained health, wellness and recovery from alcohol and drug problems.”* Substance Abuse and Mental Health Services Administration (SAMHSA).



SAC has:

- increased community awareness and preparedness for implementation of ROSC in Calhoun County by serving as a “hub” for recovery providers
- provided substance abuse addiction and recovery information to the community
- increased awareness, networking and collaboration through SAC’s Celebrate Recovery committee meetings
- included recovery information on SAC’s website and Facebook page
- collaborated with Drug Court and Sobriety Court
- participated in National Alcohol and Drug Addiction Recovery Month
  - \*proclamations to local governments
  - \*participation in the annual YMCA Corporate Cup

SAC will continue to support recovery by collaborating with treatment providers and providing education to the community. A ROSC workgroup will be formed to determine strategies to better serve those in maintaining their recovery.



**Substance Abuse Council**

## SAC'S PROGRAMS AND SERVICES

The Substance Abuse Council (SAC) is a drug prevention coalition serving the community for 25 years.

Realizing our purpose of achieving greater community health is made possible with collaborative partnerships amongst schools, youth and religious organizations, healthcare, government agencies and law enforcement, media, local businesses, community organizations, foundations; parents and youth.

SAC provides many services to the community, including:

### Educational Presentations:

- Marijuana
- Methamphetamines
- Meth Lab Identification
- Understanding Addiction
- Bullying Prevention
- Substance Abuse Recovery
- Prescription Drug Abuse
- Prescription Drug Disposal
- Physical Affects of Substance Abuse
- Underage Drinking Prevention
- Impaired Driving/Responsible Drinking
- Substance Abuse in Calhoun County

### Prevention Programs:

- Strengthening Families- youth 10-14, parents/caregivers
- Towards No Drug Abuse- grades 9-12
- Towards No Tobacco Use- grades 5-10
- LifeSkills- grades 6-8
- Alcohol Compliance Checks
- Celebrating Families — grades 5-8, parents/caregivers

### Task Forces and Committees:

- Substance Abuse Data
- Celebrate Recovery
- Underage Drinking Prevention
- Methamphetamine Prevention
- Prescription Drug Abuse Prevention

\*Educational presentations are available for all ages and community groups. Contact the Substance Abuse Council to schedule your customized presentation, learn more about our prevention programs and volunteer opportunities, or to inquire about other services we provide.

### Substance Abuse Council

140 W. Michigan Ave  
Battle Creek, MI  
49017

Phone: 269-968-4699

Fax: 269-966-4227

[www.drugfreebc.org](http://www.drugfreebc.org)



Recipients of substance abuse services have rights protected by state and federal law and promulgated rules. For information contact the Office of Substance Abuse Services, RR Coordinator, P.O. Box 30035 North Logan, Lansing, MI, 48909

## Substance Abuse Council



## ACKNOWLEDGEMENTS

### Sources:

1. Calhoun County 37th Judicial Circuit Court Family Division
2. Calhoun County 10th District Court
3. Calhoun County Public Health Department
4. El Paso Intelligence Center (EPIC) National Seizure System (NSS)
5. Kalamazoo Community Mental Health & Substance Abuse Services
6. MI Dept. of Community Health
7. Michigan Hospital Association
8. Michigan Liquor Control Commission
9. Michigan State Police
10. Michigan Profile for Healthy Youth (MiPHY)
11. Michigan Office of Highway Safety and Planning
12. Substance Abuse and Mental Health Services Administration (SAMHSA)
13. Substance Abuse Council
14. Venture Behavioral Health/Summit Pointe



Substance Abuse Council



Substance Abuse Council  
140 W Michigan Ave  
Battle Creek MI 49017  
P: 269-968-4699  
F: 269-966-4227  
[www.drugfreebc.org](http://www.drugfreebc.org)