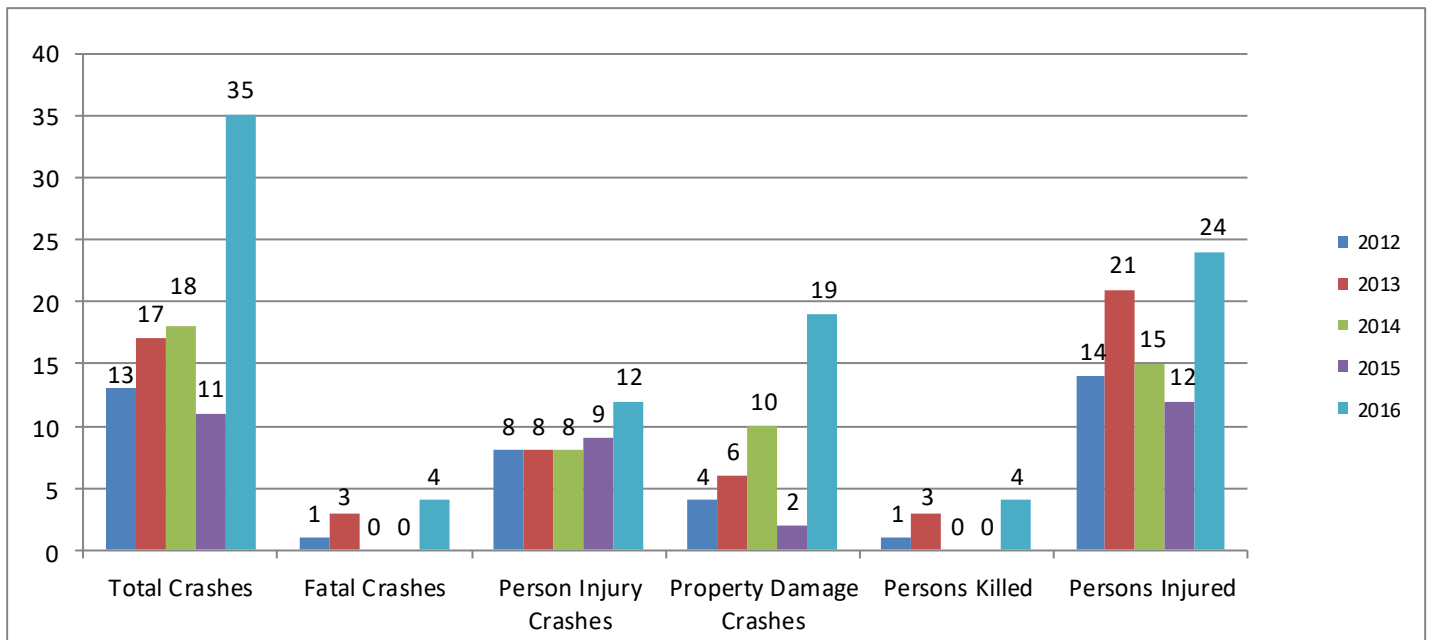


# DRUG INVOLVED TRAFFIC CRASHES

After alcohol, marijuana is the drug most often found in the blood of drivers involved in crashes. Several studies have shown that drivers with THC in their blood were roughly twice as likely to be responsible for a deadly crash or be killed than drivers who hadn't used drugs. Along with marijuana, prescription drugs are also commonly linked to drugged driving crashes.

## DRUG INVOLVED TRAFFIC CRASHES Calhoun County



A reportable crash in MI is defined as: a motor vehicle that is in transport on the roadway that results in death, injury or property damage of \$1,000 or more.

Reference: Michigan State Police